

Matchcode Client/Server API

Matchcode Products

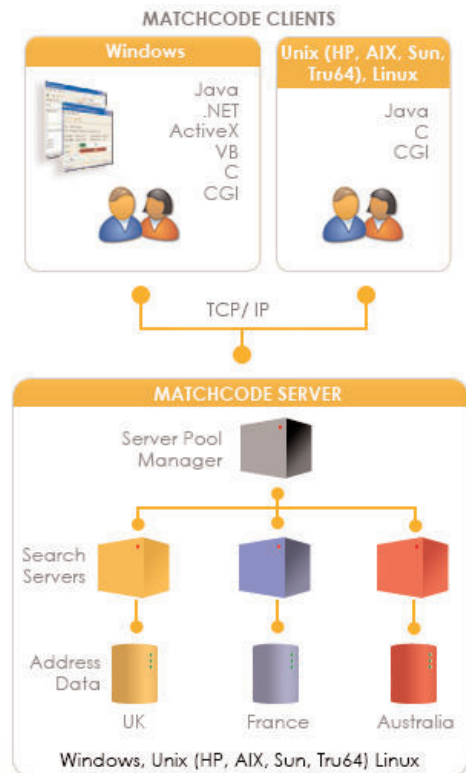
Matchcode is a family of address management software products that offers data capture, validation and batch data cleansing. The Matchcode system uses country specific phonetic and fuzzy matching routines to help ensure the highest hit rates against input data, whilst providing data that is correctly spelt and formatted, to either the country postal standard, or a custom database layout. Extended data files, along with Royal Mail Data, are used to help provide the most effective address management solution currently available. Matchcode ensures that addresses are rapidly and accurately captured with fewer keystrokes, increasing efficiency in data capture and call centre operations. Data matching routines can then be used to check, validate, and maintain existing customer data, ensuring you can qualify for Royal Mail's mailing discounts. In addition, it guarantees that all of your mailings are accurately addressed, protecting the professional image of your organisation.

Data Enhancement

Matchcode integrates with a wide range of datasets to provide additional information with the address during capture or cleansing. This can range from specific business or consumer information (SIC Codes, telephone numbers) and profiling codes (Mosaic), as well as other information such as delivery point codes, local government information, and International geo-code data (WGS84/Long-Lats for Europe).

Matchcode Client/Server API

The Matchcode range of products is client/server in architecture, allowing multiple users to simultaneously validate addresses on a single server. This makes Matchcode Client/Server solutions highly scalable, easy to maintain and flexible. The API version of our popular Client/Server product provides users with full address management functionality that can be seamlessly integrated with software applications (e.g. web-sites, intranet, CRM tools, etc.) and internal processes (e.g. quarterly data cleanse processes, daily data feeds, etc.). It is available for wide range of platforms including Linux, Windows NT/2000/XP/2003/Vista and AS400. Several versions of the Client API are available including ActiveX, COM, .NET, Visual Basic, 'C' and Java formats. The Matchcode Client/Server API is delivered via our Capscan Software Developers Kit (SDK), which includes example code and set-ups for quick and easy integration.



Matchcode Client/Server API Structure.

For further information on our full range of products and services, please call Capscan on:

020 7428 1255

Alternatively please visit our website at:

www.capscan.com

or email:

enquiries@capscan.com

Matchcode Client/Server API

Integration Advice and Support

A wide range of technical, support and integration resources are available to customers and software integrators including pre and post sales support to assist with integration and any other technical issues users may have. Our development staff have considerable experience and are always happy to advise and assist you on matters of integration. A dedicated Support Helpline is provided during normal UK business hours to provide a quick resolution to all of your problems and queries. Whether you have a question about an installation or require general software advice, the Helpline can assist. Further, a Technical Support Extranet is also available to customers, which includes online user manuals, software upgrades, data and software patches, FAQ sheets and examples of code used as part of our APIs.

FEATURES AND BENEFITS

Matchcode Client/Server API

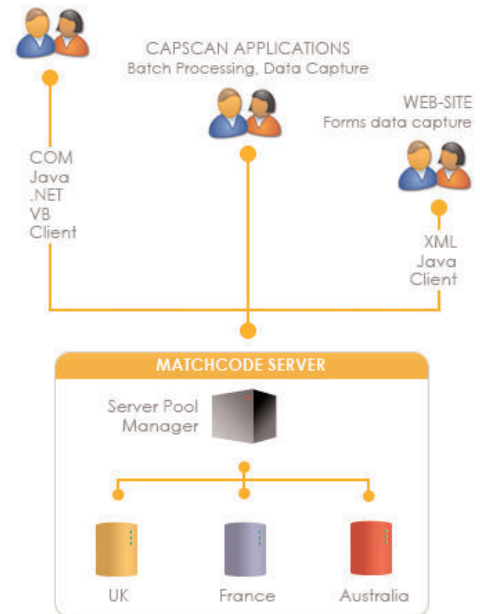
- Offers comprehensive address management functionality, allowing multiple users to simultaneously validate or cleanse addresses on a single server.
- Is highly scalable and has been tested with thousands of simultaneous clients accessing a single server process.
- Is easy to maintain through a centralised server, meaning that database updates and search engine upgrades need only be applied in one place.
- Is extremely flexible because a single installation on one platform (e.g. Sun Solaris) can be used from a variety of clients on different platforms (e.g. Linux, Windows, Java, .NET).
- Is delivered via our Software Developers Kit (SDK), which includes example code and set-ups for quick and easy integration.

EXAMPLE MATCHCODE SET-UP

Single Matchcode installation for multiple applications

INTERNAL APPLICATION

Rapid Data Entry (intranet, SAP)



Matchcode Client/Server Example Set-up.

For further information on our full range of products and services, please call Capscan on:

020 7428 1255

Alternatively please visit our website at:
www.capscan.com

or email:
enquiries@capscan.com

Matchcode Client/Server API

TECHNICAL FEATURES

- The Matchcode Client/Server API is available in a wide range of formats including C static library, DLL (Win32)/Shared library (Unix), Visual BASIC DLL (compatible with Lotus Notes), ActiveX Control (compatible with ASP), DDE Server, CGI, .NET assembly, PHP extension and Java class (see table 1).
- Software platforms supported include Linux, Windows NT/2000/XP/2003/Vista etc.
- Hardware platforms supported include RS/600, Alpha, I386, PA-RISC, MIPS etc.

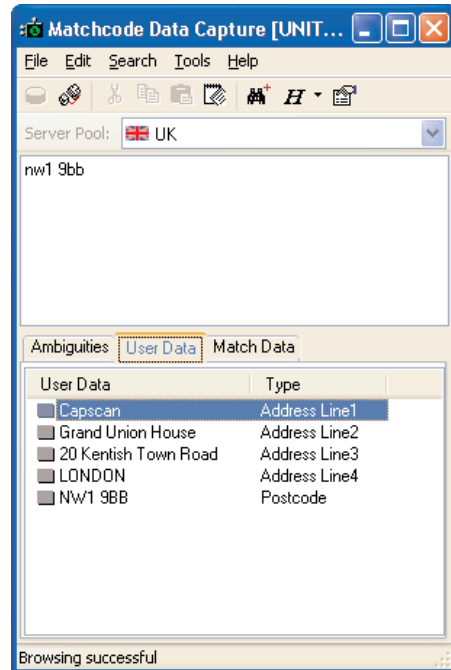


Table 1: Matchcode API Supported Systems

Operating System	Hardware	Version	Matchcode	Matchcode Client/Server
AIX	Power	5.2	✓	✓
Tru64	Alpha	5.1	✓	✓
HP-UX	PA-RISC	11	✓	✓
HP-UX	Itanium	11	✓	✓
Linux	I386	Glibc 2.3.2	✓	✓
Solaris	Sparc	8, 9, 10	✓	✓
Solaris	X86	10	✓	✓
Win32	I386	NT/2000/XP/2003/Vista	✓	✓

For further information on our full range of products and services, please call Capscan on:

020 7428 1255

Alternatively please visit our website at:

www.capscan.com

or email:

enquiries@capscan.com